

Medical office
Space
FOR LEASE



Next to

LMHHealth

There's a new name for your healthy future.

346 Maine Street Suite 130

Lawrence
Kansas

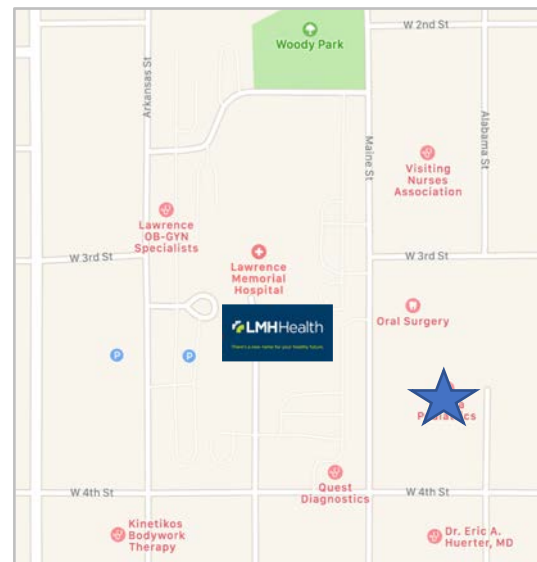


Property Description

Large turnkey doctors office next to LMH Health. Available September 2019. Large 2 sided waiting area + 20 exam rooms + 8 doctors offices and 7 restrooms. Breakroom and showers in basement.

Property Highlights

- Zoning: Commercial Strip
- Lease Type: Gross
Tenant responsible for gas, elec, water
- 10,940 SF
- 20 Exam Rooms
- 8 Doctors offices



AGENT:
EVAN HOLT
(785)640-8923
Lawrence KS
evanholt@stephensre.com

BROKERAGE:
Stephens Real Estate
2701 W. Sixth Street
Lawrence KS, 66049
www.Commercial.StephensRE.com

Office Space
FOR LEASE



Excellent
Large Medical

346 Maine Street Suite 130

Lawrence
Kansas

Floor Plans

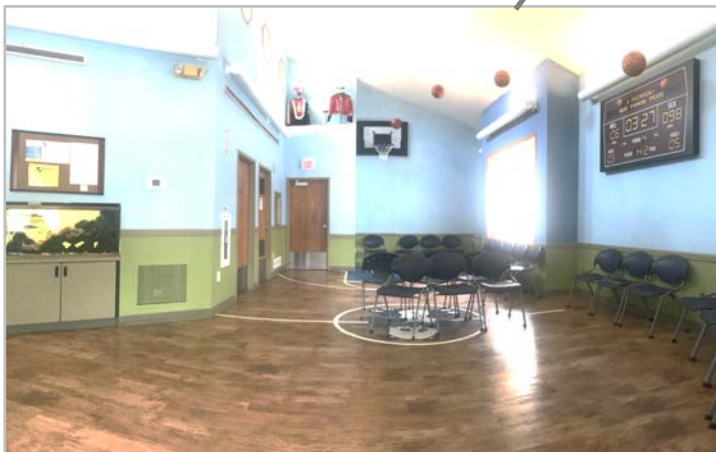
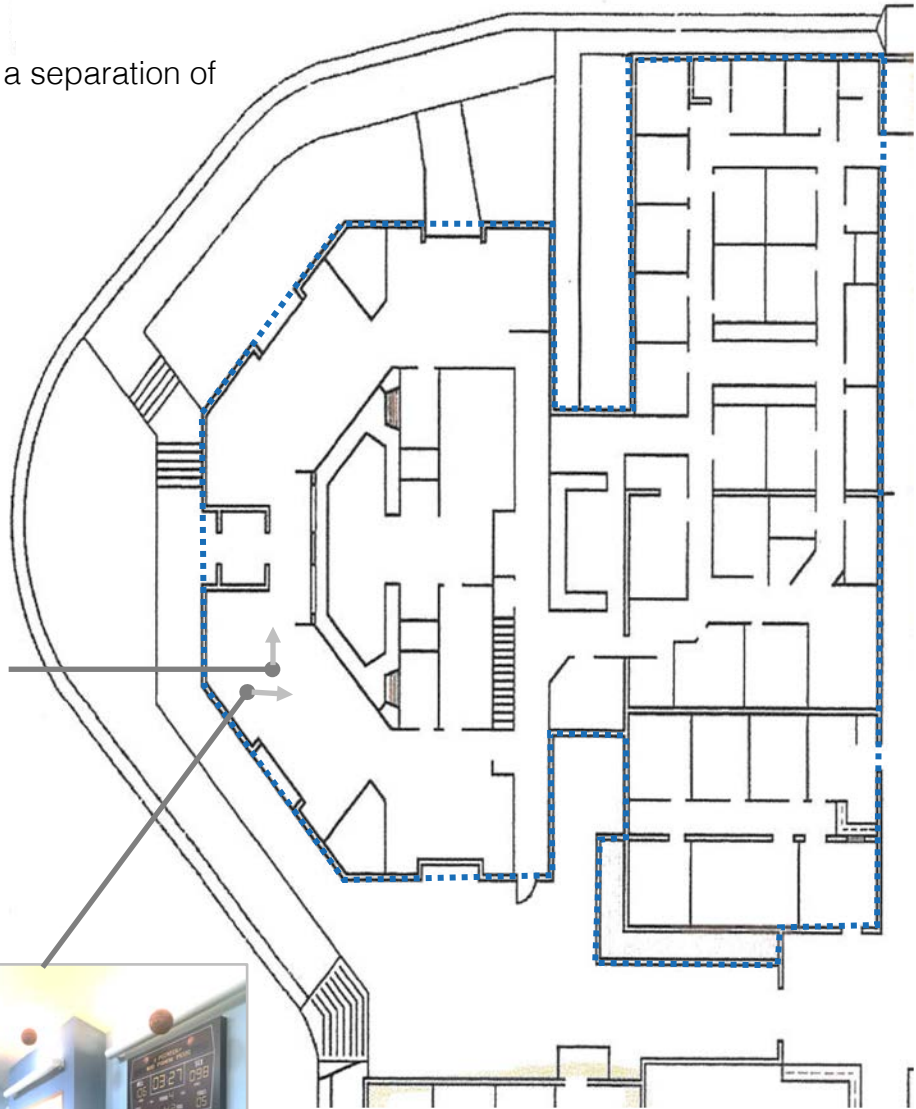
Large 2 sided Lobby allows for a separation of patients.

20 Exam Rooms with sinks.

8 Doctors Offices

7 Restrooms

Large breakroom in basement
w/ shower



Available
September 2019

Disclaimer: Material intended for marketing purposes only. While Stephens makes every effort to ensure accuracy, the figures and drawing are only rough estimations and need to be verified by tenant

Stephens Real Estate
2701 W. Sixth Street
Lawrence KS, 66049