

Downtown
FOR LEASE



Amazing
central endcap
opportunity!

943 Massachusetts Street

Lawrence
Kansas



Property Description

- Prime downtown location. (Equivalent to Main Street)
- Open floorplan with 2nd floor expansion opportunity.
- In heart of historic downtown, on one of the busiest corners.
 - National retailer presence
 - Specialty local shops
 - Top tier restaurants



Property Highlights

- Unit size: 2,845 Square feet
 - + 1,200 sqft basement
 - + 2925 sqft 2nd floor
- Zoning: Commercial Downtown
- Year Built: 1930
- Lease Type: Triple Net
- Lease Rate: \$3,400 + NNN for 1st floor & basement

AGENT:
EVAN HOLT
(785)640-8923
Lawrence KS
evanholt@stephensre.com

BROKERAGE:
Stephens Real Estate
2701 W. Sixth Street
Lawrence KS, 66049
www.Commercial.StephensRE.com

Downtown
Retail Endcap
FOR LEASE



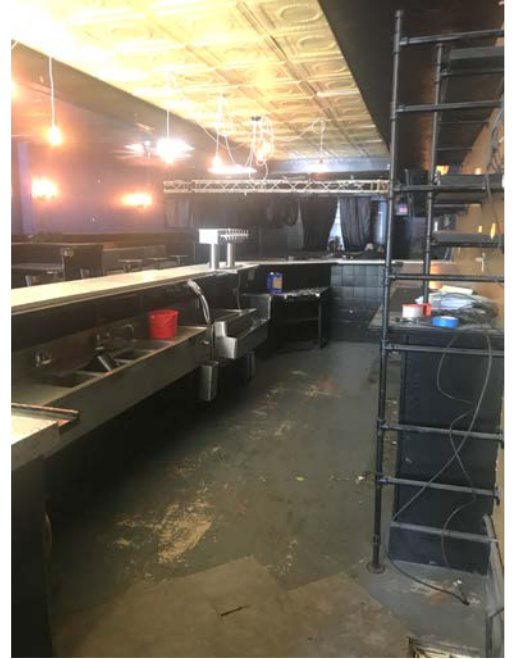
Amazing
central endcap
opportunity!

800 Massachusetts

Floor Plan



Bar with taps



Mostly open floorplan

Grandfathered
Liquor license

One of the few remaining liquor only
licenses left in downtown Lawrence



Basement: Walk in Cooler